

LM20 Motion Set for GWR
LM29 2-6-2T Large Prairies and Churchward/Collett 2-6-0 Moguls

COMET MODELS components complementing this motion set are:

Frames	LF20	(Large Prairies)
Frames	LF29	(Moguls)
Cylinders	LC2	Crossheads LS8
Pony Truck	LS2	Trailing truck LS2

This motion set etch is designed to fit our loco frame packs LF20 (Large Prairies) and LF29 (Churchward/Collett Moguls). All folds should be made with the half-etch to the inside, unless stated otherwise, and reinforced with solder. All parts are numbered on the etch and are identified in the instructions by the number in brackets. Where components are handed they are marked on the etch 'L' for left (nearside) and 'R' for right (offside).

NOTE: Crossheads and pins are NOT supplied in this pack, but are available separately - COMET MODELS pack LS8.

We strongly recommend that the cylinder and motion bracket assemblies are arranged to bolt on to the frames so that everything can be stripped down and re-assembled as required, otherwise you are sure to finish up with an axle nut or whatever hidden behind the motion. A little forethought when positioning the frame spacers for chassis assembly will facilitate this.

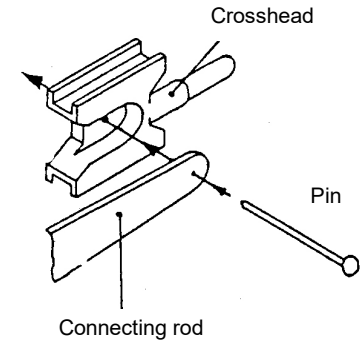
Parts List

- | | |
|--------------------------|-------------------------------|
| 1. Coupling rods | 4. Connecting rod overlays |
| 2. Coupling rod overlays | 5. Slide bars |
| 3. Connecting rods | 6. Slide bar support brackets |

Assembly sequence

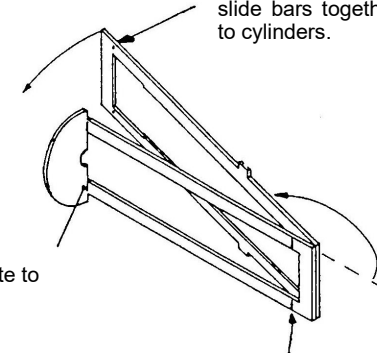
- Fix the plain outer coupling rod overlays (2) to the half-etched inner rods (1). Note the rods are handed - the half-etch detail on the inner rods should be next to the wheels. If you wish to articulate the rods, the inner rod should be split as per the sketch before assembly.
- Fix the outer connecting rod overlays (4) to the plain inner rod (3) - note the rods are handed.
- Assemble the connecting rods to the crossheads inserting the pin from the back as per the sketch.
- Assemble the slide bars (5) to the cylinder rear covers as per sketch, and fettle the slide bars and crossheads as necessary to achieve an easy sliding fit.
- Bend each slide bar support bracket (6) through 180° about the central half-etch line, making sure the half-etch is to the outside of the fold, and solder the two halves together. Assemble the brackets to the outside of the slide bars, ensuring that they locate between the small tabs on the slide bars.

Crosshead assembly (viewed from rear)



Slide bar assembly

Part off at outer half etched lines after soldering inner and outer halves of slide bars together and before fixing to cylinders.



Fold cylinder backplate to 90° as shown.

Part off at inner half etched lines when fixed to cylinders.

Coupling rods

