

## S14B BR(S) BULLEID REBUILT TAVERN TRAILER (Composite Diner) D2665

8 rebuilt from D2664 1950-1951; withdrawn 1965-1967; 2 preserved 64'6"

These etched sides can be built into a complete coach using products from our range as supplied in our full kits. Please refer to the panel opposite. Should you prefer they can also be used to overlay the Bachmann Bulleid coaches, or as a basis for a scratchbuilt coach.

This coach represents the final form of these vehicles. After being in service as D2664 for about a year the coaches were rebuilt following severe complaints from diners. The fundamental change was the replacement of the high windows by conventional ones, allowing travellers to see out whilst dining. The seating was reduced from 24 to 18 firsts and from 40 to 36 thirds, laid out 2+1 in both saloons. The saloons were also changed over end for end. At the same time the brakes were changed from the Prestall system to conventional vacuum cylinders and V hangers, initially retaining the single large vacuum reserve cylinder. The original version to D2664 is available as Comet Models S11B.

They ran in tandem with a Tavern Car to D2663 (Comet S11A) or the rebuilt version to D2668 (Comet S14A). They were painted first in BR crimson and cream and in 1957 they were given BR(SR) green.

Running numbers were S7833S-S7840S. Occasionally the pairs were split up and ran as individual coaches with other SR catering vehicles.

7833 and 7894	6.30am Exeter to Waterloo returning at 1.00pm.
7834 and 7899	11.00am Waterloo to Exeter returning at 4.30pm.
7835 and 7896	12.30pm Exeter to Waterloo returning at 7.00pm.
7836 and 7893 and 7838 and 7892	were spare sets (probably at Clapham Yard)
7897 and 7837	10.08am Bournemouth West to Waterloo returning at 6.30pm.
7839 and 7895	10.30am Exeter to Waterloo returning at 1.00pm.
7840 and 7898	8.20am Bournemouth West to Waterloo returning at 4.35pm ( <i>The Royal Wessex</i> )

### Sample formations

SR set 517 Waterloo-Weymouth Quay 1963 BSK\*/SO\*\*/SO\*\*/RKB/RCO/FK\*/SO\*/SO\*/BSK\*  
 \*Mk1 stock \*\*either Bulleid or Mk1 stock

### Further information

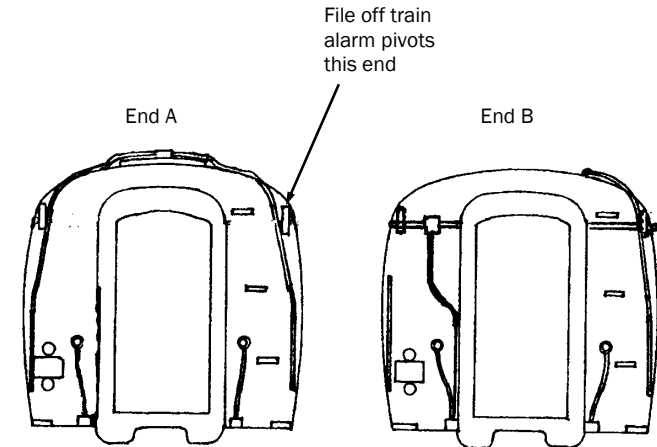
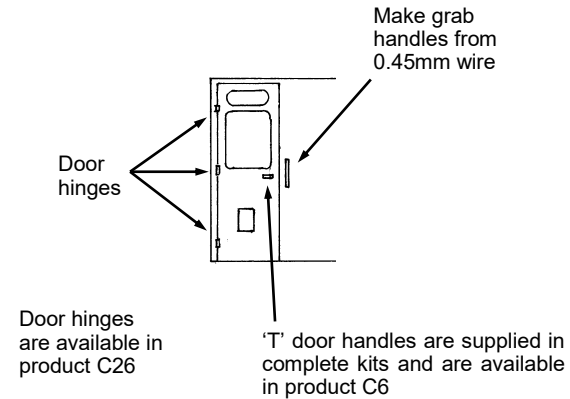
An Illustrated History of Southern Coaches  
 Bulleid Coaches in 4mm scale  
 Bulleid's SR Steam Passenger Stock  
 British Railways Pre-Nationalisation Coaching Stock Vol. 2

Mike King OPC  
 S W Stevens Stratten MRC Planbook 1  
 David Gould Oakwood Press  
 H Longworth OPC

COMET MODELS components required to complete this carriage are:

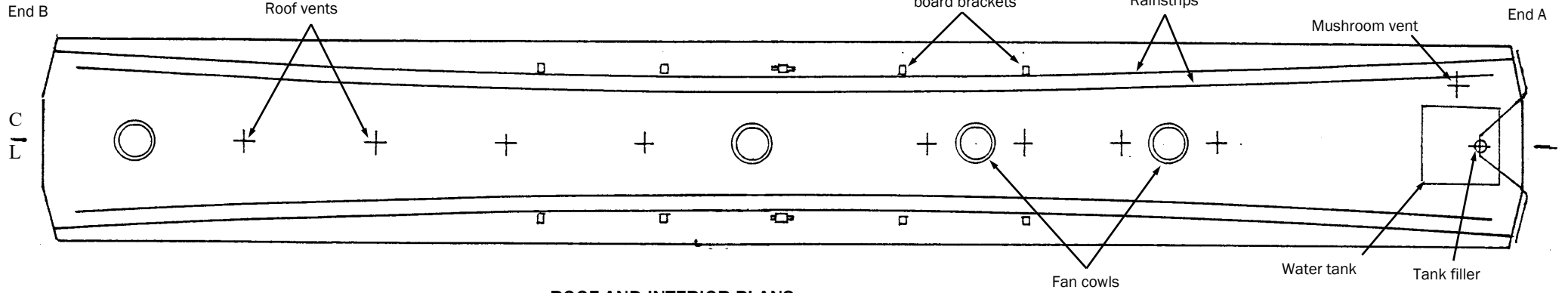
Underframe	US1	Bogies	BS1
Underframe castings	UCS1	End castings	ECS1
Ends	ES1	Roof castings	RC1
Roof	C10	Fan cowls	RC4
Interior	INT3	Large vac. Tank	C55

Scrap views showing additional detailing of sides and ends  
 (not all details may apply to this diagram)

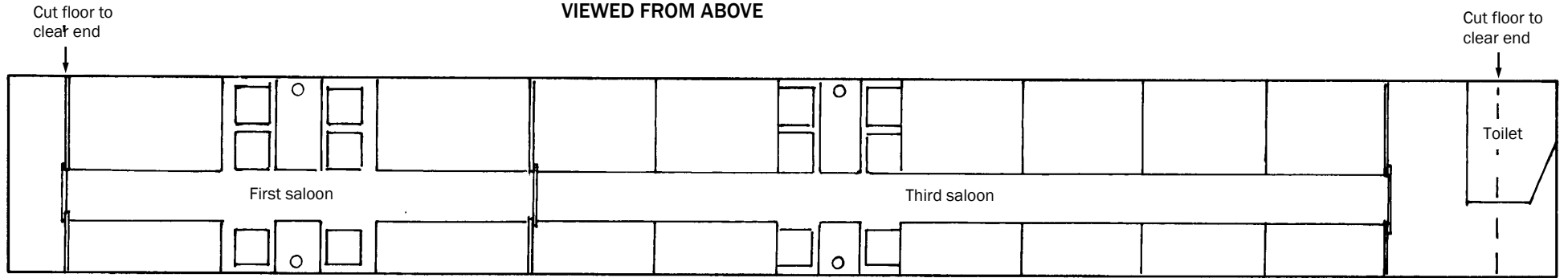


D2665

Train alarm gear this end



ROOF AND INTERIOR PLANS VIEWED FROM ABOVE



UNDERFRAME VIEWED FROM BELOW

