

## MT100

### REPLACEMENT CHASSIS FOR THE BACHMANN GWR 3500 GALLON TENDER

This kit has the original type of frames found on the majority of the tenders used with the Moguls and Manors. Three pairs of 16mm diameter tender wheels with 2mm diameter axles are needed to complete. Provision is made for the fitting of a Bachmann coupling (not included).

Before removing parts from the fret drill out the chassis axle holes and the holes in the line of six axle bearing washers with a 2.0mm drill. All fold lines should be on the inside of the bends.

Take the chassis (1) and bend down the sides at right angles to the top. Solder an axle bearing washer (2) to the outside of the frames over each of the axle holes, using the shank of the 2.0mm drill through the frames and washers to ensure correct positioning. Fix pieces of the 0.7mm wire through the small holes in the chassis, protruding about 4mm either side to form the brake supports (3). These will be trimmed to length after fitting the brake gear. Bend down the ends of the vacuum reservoir bracket (4), fix the bracket into the slot in the top of the chassis, then fix the vacuum reservoir casting (5) between the ends of the bracket. It will be found easier to paint the chassis at this stage rather than after the wheels are fitted.

Fit the wheels to the chassis, using the axle spacer washers (6) to take up sideplay in the front and rear pairs of wheels. If the wheels have extended or pinpoint axles, the axle ends will need to be shortened so that they are almost flush with the wheel faces before they are fitted to the chassis. Next fit the brake shoes (7) to the support wires, noting that they are handed. Thread pieces of 0.7mm wire through the lower ends of the brakes to form the tie bars (3), threading the wire through the holes in the pull rods (8) at the same time. After fixing, the ends of the wires are trimmed as necessary.

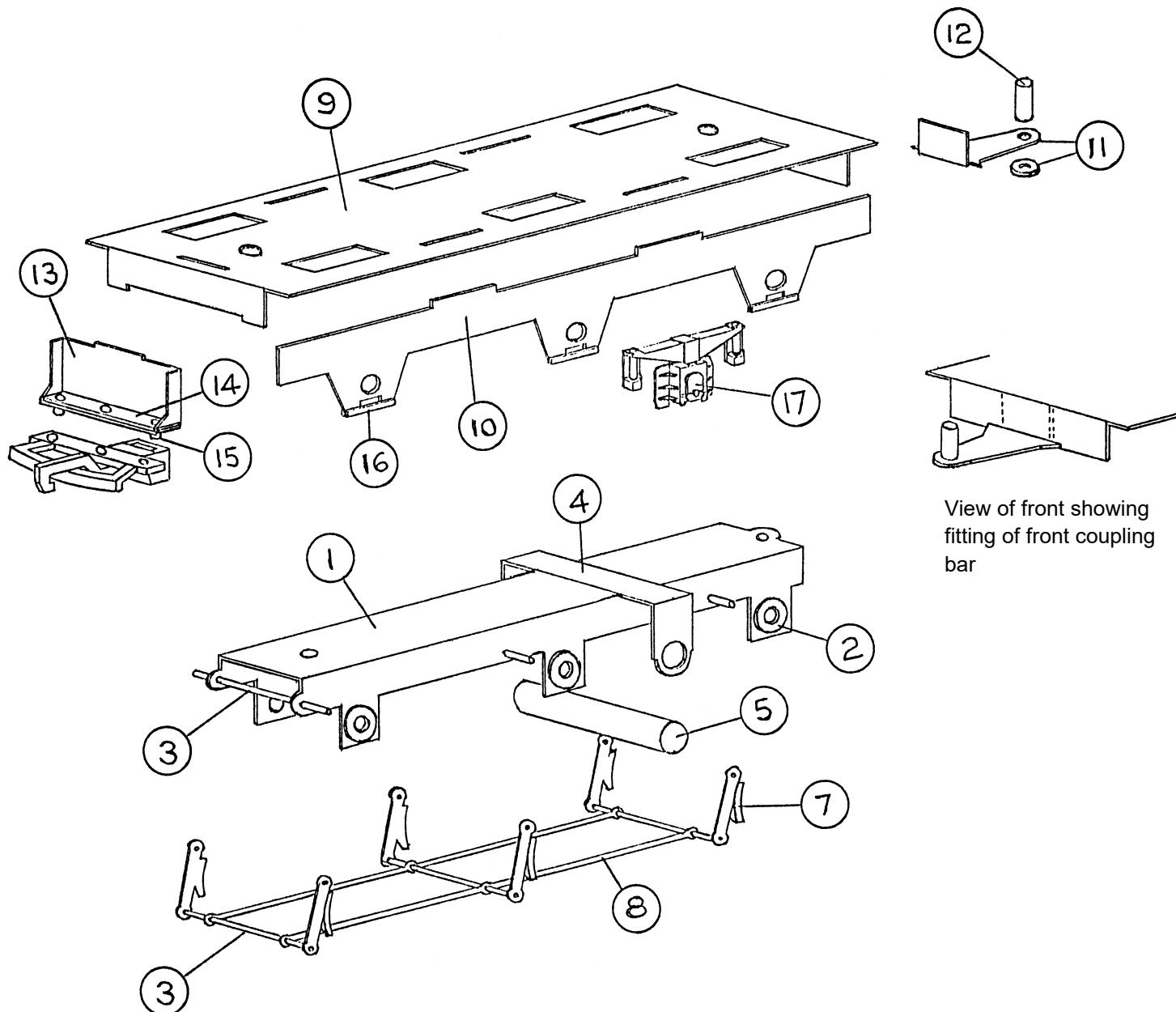
Put the assembled chassis to one side, and take the footplate (9), bending the ends down at right angles. Slot the frames (10) into the footplate and fix in place. If using solder for assembly it will be found better to tack solder where the tags are and at the ends, as attempting to solder along the whole length of the frame may cause distortion due to expansion from heat build up. Next bend up the end of the front coupling bar (11), fix the washer under the hole, and fix the coupling pin (12) into the hole at the same time. The assembled coupling bar can now be fitted to the back of the plate at the front of the footplate, in the recess in its lower edge.

If fitting a Bachmann coupling, fold up the Bachmann coupling bracket (13), fix the strengthening piece (14) to it, and fix two 1/8" long pieces cut from the 1/16" diameter rod into the outer holes to form the location pins (15). The assembled coupling bracket can now be slotted into the footplate, and the Bachmann coupling screwed to it.

Take the six strips which form the axlebox retaining bars (16) and fix them to the lower edges of the frames, then fix the axleboxes (17) into the holes in the frames.

To fix the two assembled parts of the chassis to the tender body, drill out the two fixing holes in the body with a No.50 drill, tap the holes 8BA, and use the two 8BA screws provided (18) to screw the parts together.

Tender steps are provided on the fret for those wishing to replace the plastic ones.



View of front showing fitting of front coupling bar

## PARTS LIST

1. Chassis
2. Axle bearing washers x 6
3. Brake supports & tie rods x 6 (0.7mm wire)
4. Vacuum reservoir bracket
5. Vacuum reservoir casting
6. Axle washers x 4
7. Brake shoes x 3 LH & 3 RH
8. Brake pull rods x 2
9. Footplate
10. Frames x 2
11. Front coupling bar & washer
12. Front coupling pin (3/32" dia. rod)
13. Bachmann coupling bracket
14. Strengthening piece
15. Coupling location pins x 2 (1/16" dia. rod)
16. Axlebox retaining bars x 6
17. Axlebox & spring castings x 6
18. 8BA x 1/4" screws x 2

Mainly Trains is part of  
Wizard Models Limited

PO Box 70, Barton upon Humber  
DN18 5XY

Tel 01652 635885  
web [www.wizardmodels.ltd](http://www.wizardmodels.ltd),  
e-mail [andrew@modelsignals.com](mailto:andrew@modelsignals.com)