

M46 BR(M) IVATT PORTHOLE STOCK CORRIDOR BRAKE THIRD (BTK) D2161

439 built 1949-1951; withdrawn 1952-1970; 6 preserved 57'

These etched sides can be built into a complete coach using products from our range as supplied in our full kits. Please refer to the panel opposite. Should you prefer they can also be used for scratchbuilding.

Although an LMS design, these distinctive coaches, with their round 'Porthole' toilet windows, were built at Wolverton and Derby by BR. They were a common sight on all types of passenger workings. They survived in revenue service long enough for some to receive the BR corporate blue/grey livery introduced from 1964, the only ex-LMS type so treated apart from one sleeper first to D2166.

Sample formations

Midland Division sets	BTK /TK/CK/ BTK
Birmingham-Newcastle 1954	BTK /TK/CK/CK/TK/ BTK /RB/BTO I ER stock I
Liverpool-Hull 1954	TK/ BTK /CK/CK/RB/TK/TK/TK/ BTK
Glasgow-Stranraer	BTK /CK/ BTK /BG

Running numbers

26666-26755	built 1950	Derby	27006-27045	built 1950/51	Derby
26756-26880	built 1949/50	Wolverton	6030-6038	built 1950	Wolverton
26881-27005	built 1950	Wolverton	27046-27095	built 1950	Wolverton

Livery

Coaches built around the time of nationalisation received maroon livery but without company insignia. Many (possibly all of this diagram) went directly into BR crimson and cream. From 1956/7 BR maroon with simple lining was adopted. Number and lettering styles, insignia and class designation placement did not always follow the changes of livery. For further information on a particular vehicle at a specific date please consult references and photographs.

Coaches left the works with the roof finished in a metallic aluminium paint. However, in service the roofs quickly took on an overall muddy grey colour.

Underframes and bogies were finished in black.

Further information

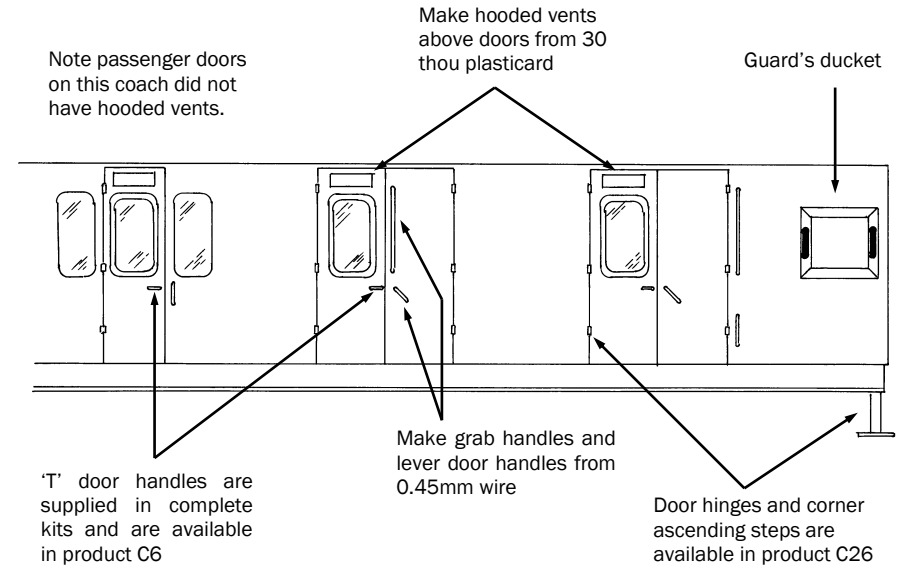
LMS Standard Coaching Stock Vol. II Historic Carriage Drawings	Jenkinson & Essery Jenkinson & Campling	O.P.C. Ian Allan
Passenger Train Formations 1923-1983 LMS LM Region British Railways Pre-Nationalisation Coaching Stock Vol. 2	Clive S Carter H Longworth	Ian Allan O.P.C.

COMET MODELS components required to complete this carriage are:

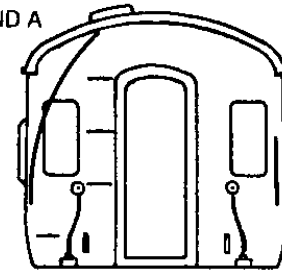
Underframe	UM2	Bogies	BM3
Underframe castings	UCM1	Roof castings	RC3
Ends	EM4	End castings	ECM2
Roof	C10	Interior	INT2
Duckets	C15		

Scrap views showing additional detailing of sides and ends

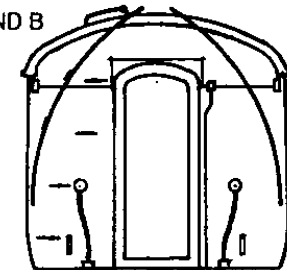
(not all details may apply to this diagram)



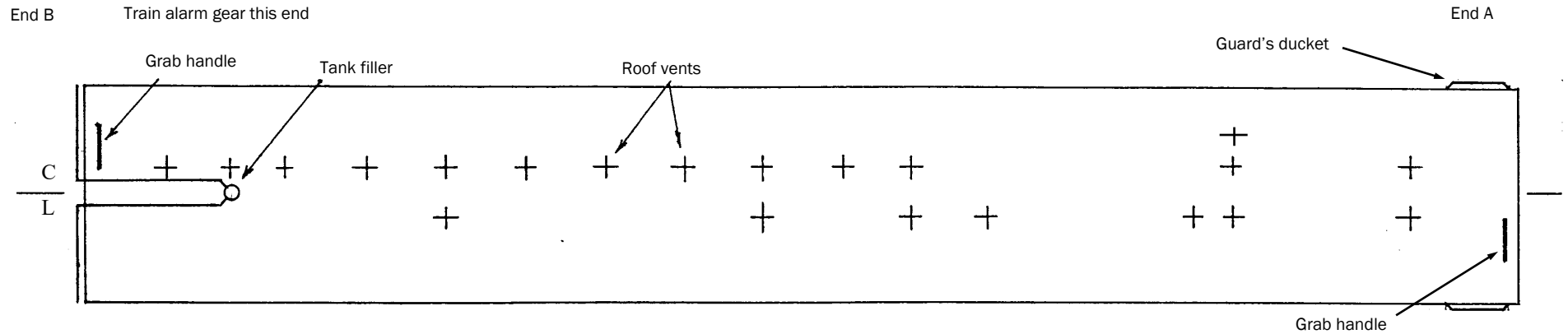
END A



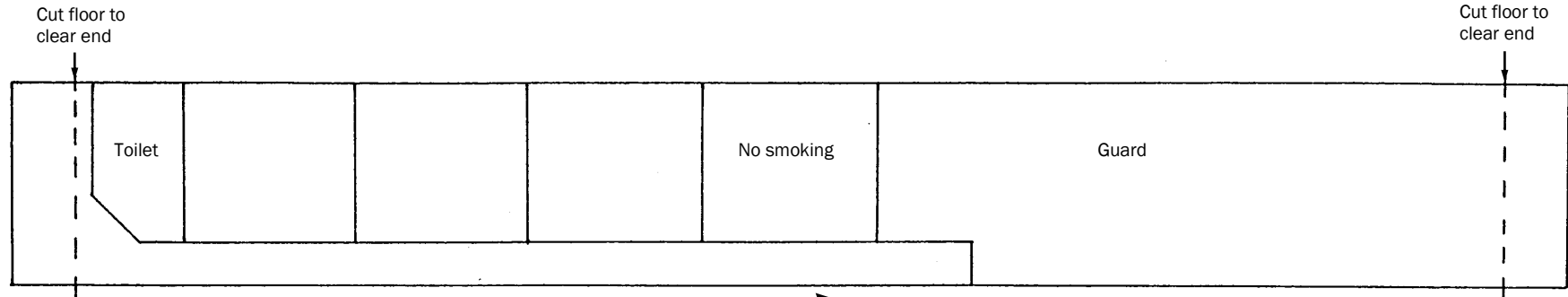
END B



D2161



ROOF AND INTERIOR PLANS
VIEWED FROM ABOVE



UNDERFRAME VIEWED FROM BELOW

