

## M44 LMS STANIER CORRIDOR BRAKE THIRD (BTK)

D1968

509 built 1937-1946; withdrawn 1955\*-1967; 1 preserved

57'

\* - 4 withdrawn before 1948

These etched sides can be built into a complete coach using products from our range as supplied in our full kits. Please refer to the panel opposite. Should you prefer they can also be used for scratchbuilding.

This was the most numerous Stanier brake third with 509 being built in two groups. As general service coaches these ubiquitous vehicles would have been seen all over the LMS and BR(LMR).

### Sample formations

Midland Division sets	<b>BTK/TK/CK/BTK</b>
Pines Express 1949	<b>BTK/CK/BCK/CK/CK/RC/TO/TO/TO/TK/BTK</b>
Liverpool-Hull 1954	<b>TK/BTK/CK/CK/RB/TK/TK/TK/BTK</b>
Glasgow-Stranraer	<b>BTK/CK/BTK/BG</b>

### Running numbers

5957-6020	built 1937	Derby	26321-26370	built 1945	Derby
26100-26189	built 1938	Derby	26371-26445	built 1945/6	Derby
26191-26264	built 1939	Derby	26446-26545	built 1946	Derby
26265-26320	built 1939	Wolverton			

### Livery

The LMS coach body colour was maroon with black ends. Simple lining was adopted at the beginning of 1934. In 1946 the yellow was replaced with a much lighter shade referred to as 'straw'. From 1949 coaches received BR crimson and cream. From 1956/7 BR maroon with simple lining was adopted.

Number and lettering styles, insignia and class designation placement did not always follow the changes of livery. For further information on a particular vehicle at a specific date please consult references and photographs.

Coaches left the works with the roof finished in a metallic aluminium paint. However, in service this quickly took on an overall muddy grey colour.

Underframes and bogies were finished in black.

### Further information

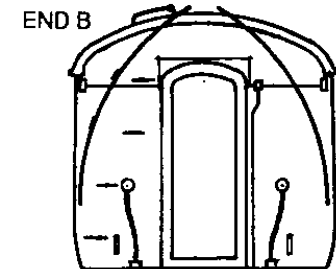
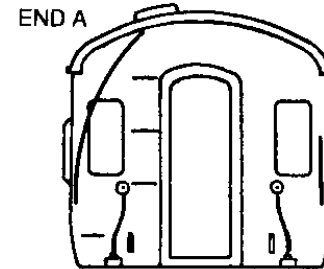
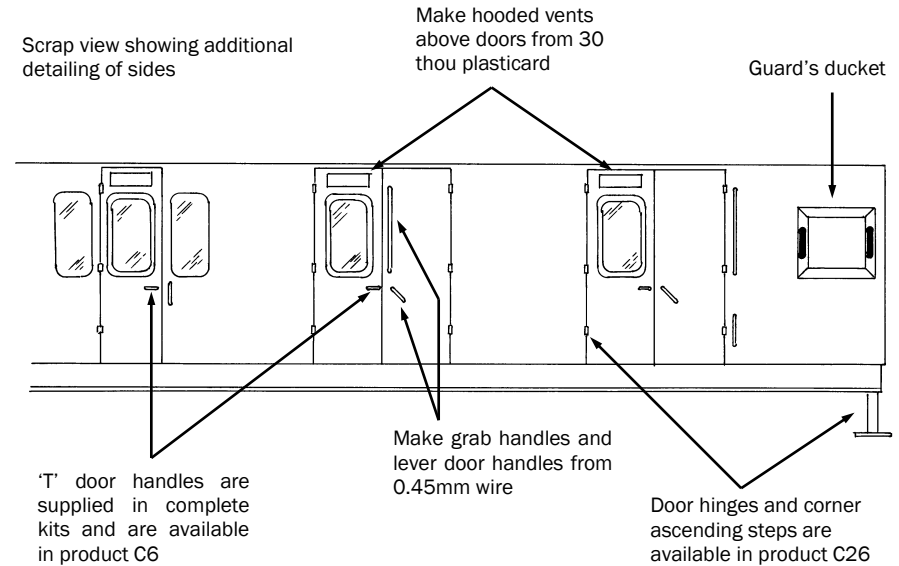
LMS Standard Coaching Stock Vol. II	Jenkinson & Essery	O.P.C.
Historic Carriage Drawings	Jenkinson & Campling	Ian Allan
Passenger Train Formations		
1923-1983 LMS LM Region	Clive S Carter	Ian Allan
British Railways Pre-Nationalisation Coaching Stock Vol. 2	H Longworth	O.P.C.

COMET MODELS components required to complete this carriage are:

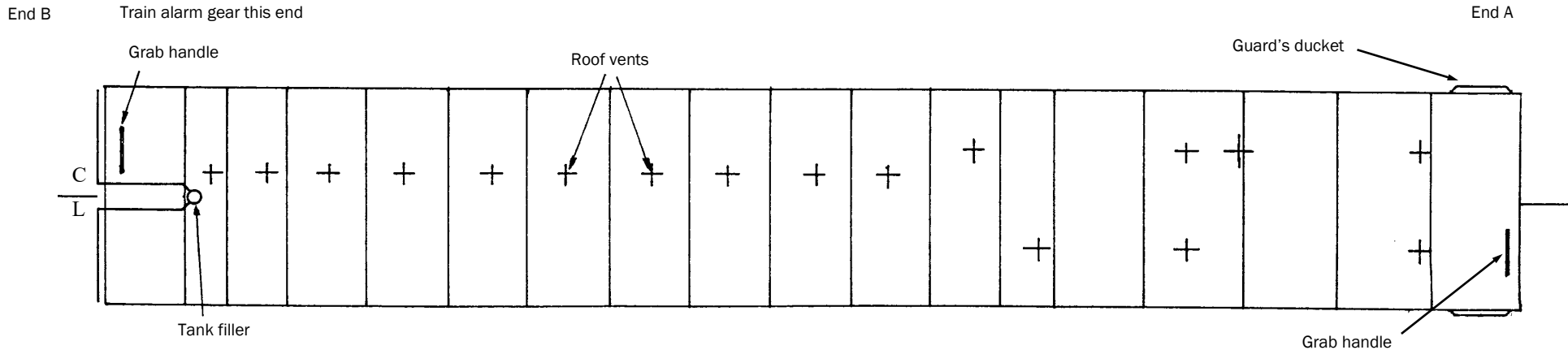
Underframe	UM2	Bogies	BM3
Underframe castings	UCM1	Roof castings	RC2
Ends	EM4	End castings	ECM2
Roof	C10	Interior	INT2
Duckets	C15		

### Scrap views showing additional detailing of sides and ends

(not all details may apply to this diagram)



D1968



ROOF AND INTERIOR PLANS  
VIEWED FROM ABOVE

