

MT221

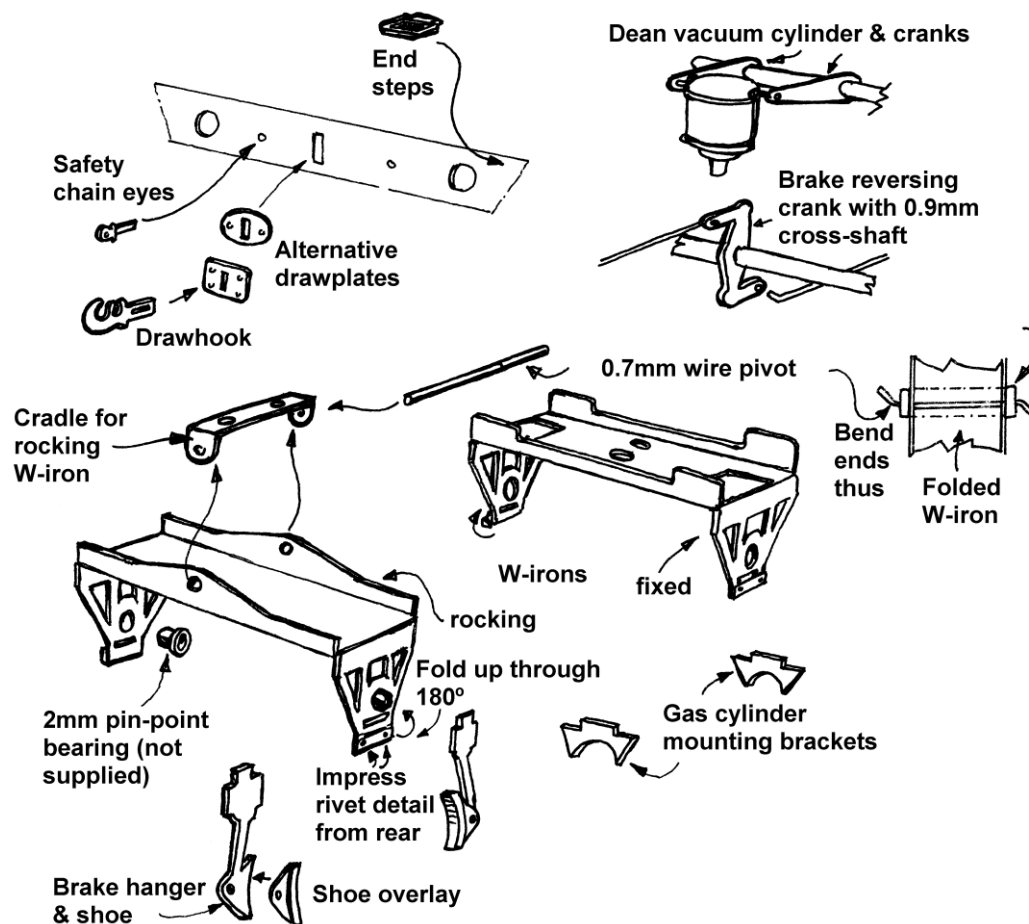
Etched running gear for GWR 4-wheeled vehicles (3'7" wheels)

These etched W-irons and other parts are intended for upgrading and/or compensating plastic rolling stock such as the Ratio 4-wheeled coaches (and other models using that underframe), Parkside's Python A, Special Cattle wagon and Fruit D vans and RTR vehicles such as the Lima Paco C horsebox. They are also suitable as a basis for scratchbuilt or modified kit built underframes for other GW 'Brown' vehicles such as carriage trucks, horseboxes, perishables wagons, etc., fitted with 3'7" diameter wheels.

The fret includes fixed and rocking W-irons and clasp brake gear. GW-specific items include gas cylinder brackets, brake cranks to suit the supplied Dean vacuum cylinder and a brake pull-rod reversing crank. Other parts for the upgrading/detailing of plastic vehicles include drawbar reinforcing plates and draw hooks, safety chain eyebolts, end steps, and door T and commode handles. Further brake gear parts including yokes, safety loops, vee hangers and axle cranks can be found in profusion on our fret MT230.

The W-iron etches take standard 2mm diameter turned pin-point bearings and 26mm pin-point axles. The usual wheel is a 3'7" (14mm diameter) Mansell centred type, although later vehicles such as the Fruit D, Paco C and Python had normal steel disc coach wheels. All are available from Wizard Models.

The only assembly point to note is that the rocking W-iron should be a nice slop-free fit in the cradle and free to rock without catching on the rear of the solebars.



Mainly Trains is part of Wizard Models Limited

PO Box 70, Barton upon Humber DN18 5XY

Tel 01652 635885, web www.wizardmodels.ltd, e-mail andrew@modelsignals.com