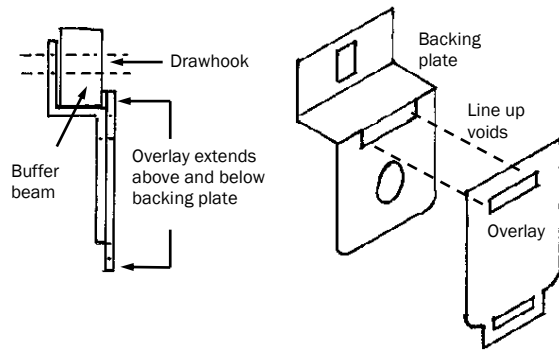


## LS1 AWS Equipment

Automatic Warning System (AWS) equipment began to be generally installed on steam locomotives from the late 1950s. Priority was given to locos working express passenger trains, although many freight locos did get it in due course. It was not fitted to ex-GWR locos, as most already had that company's ATC equipment, which performed the same task.

The pack contains four components: battery box; vacuum reservoir (the larger cylinder); timing reservoir; and a two-part coupling "bang plate", which protected the AWS receiver from being damaged by a swinging coupling. The location of the components varied greatly between classes, and you will need to check with photographs for accuracy. The battery box was often located between the frames below the smokebox door, under the cabside, or on the offside running plate. The cylinders were usually to be found on the running plate as well. For completeness, an electrical conduit was usually found running underneath the nearside footplate angle.

Bang plate detail:



Fold the plate as shown then fix the overlay to it and attach this assembly behind the buffer beam with the top of the overlay overlapping the bottom of the buffer beam itself. The rectangular hole behind is to clear the drawhook, which may need filing down to fit.